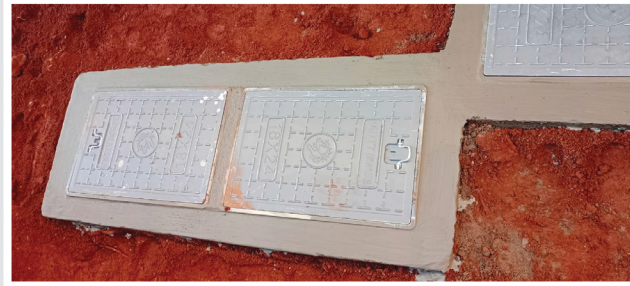




Step 5: Cover the soaking pit with dump proof membrane (black polythene)



Step 8: Final finish



Step 6: Cover with soil



Step 7: Make provision for 2 inspection points/manhole covers - 600mm by 450mm as shown in the picture



BIOTANK BIODIGESTER BENEFITS

- ▶ 2 m³ biodigester suitable for 15 users
- ▶ Its more affordable
- ▶ It takes just 2 hours to install
- ▶ Its factory manufactured hence the quality is standardised
- ▶ Its durable
- ▶ It has better effluent quality hence a cleaner environment

Get

IN TOUCH

+254 798 216 606

+254 707 752 508

+254 20 784 2006

info@biotankafrika.co.ke

biotankafrika@gmail.com

f t i biotankafrika



BIOTANK BIODIGESTER

ASSEMBLY AND INSTALLATION GUIDE

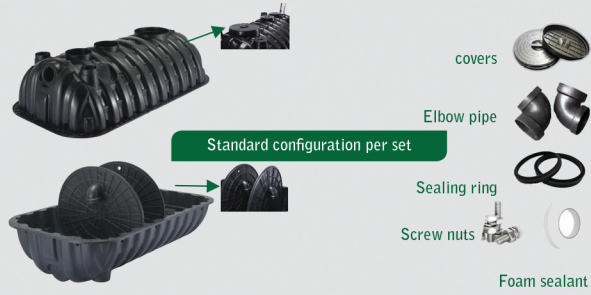
2.0M³

BIOTANK BIODIGESTER ASSEMBLY



From raw material selection to production designing and testing, each procedure is strictly controlled to achieve highest quality standards.

Our Biotank biodigester is injection molded and is produced in stable, quality, uniform in color, without deviation in weight and thickness.



The upper *1/bottom shell *1/partition board*2/elbow pipe*2/covers*3/screws nuts/foam sealant

ASSEMBLY

1. lay down the bottom cover
2. Fix partition board on the marked rails only
3. Elbow MUST face the inlet side of the tank
4. Sealing tape on the edge of the bottom cover (no need to tear the upper layer)
5. Note that inlet & outlet are already marked.
6. Install up cover
7. Sealed by bolts and nuts
8. Cover the viewing port
9. Assembly finished



How it works

The first chamber: the primary fermentation decomposition, loose feces rises due to the expansion of fermentation Forming three layers

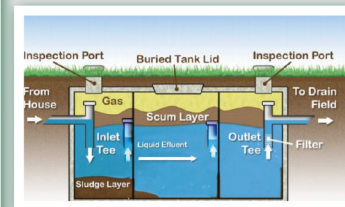
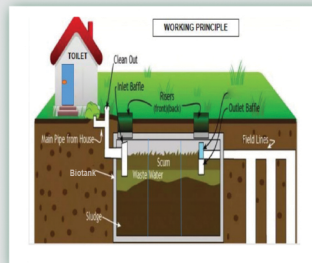
1. The upper layer is fecal epidermis.
2. The intermediate layer is fecal liquid.
3. And the bottom layer is fecal residue.

Eggs of worms are heavier than fecal mixtures settled naturally to the bottom of the biotank for fermentation decomposition. This process takes more than 20 days.

The second stage: storage chamber 2.

The treated feces from the chamber 1 enter into chamber 2, which basically did not contain eggs of worm and pathogenic mirror organisms. This process takes more than 10 days.

After second stage, the treated feces from chamber 2 enter into chamber 3, it already met the requirements of harmless treatment and could be directly used as organic fertilizer.



BIOTANK BIODIGESTER INSTALLATION



Step 1:
Excavate for the biotank biodigester approx. **5ft by 7ft** & a depth of 4ft from the last manhole pipe



Step 2:
Excavate for soak pit approx. 7ft long by 6ft wide and a depth of 7ft



Step 3: Position the biotank biodigester inside its pit. Make sure to use 100mm PVC waste pipe. Install the outlet pipe as shown in the picture above.



Step 4: Hand pack hardcore rocks in the soak pit as shown in the picture. Ensure you use low porosity rocks as the ones in the picture above

