

BIOTANK BIODIGESTER

ASSEMBLY AND INSTALLATION

Guide

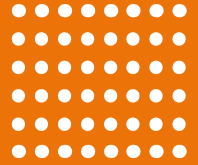
3 M³



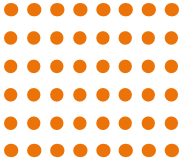
From raw material selection to production designing and testing, each procedure is strictly controlled to achieve highest quality standards.

Our Biotank biodigester is injection molded and is produced in stable, quality, uniform in color, without deviation in weight and thickness.

ASSEMBLY



The upper *1/bottom shell *1/partition board*2/elbow pipe*2/
covers*3/screws nuts/foam sealant



- ▶ Lay down the bottom cover
- ▶ Fix partition board on the marked rails only
- ▶ Elbow MUST face the inlet side of the tank
- ▶ Sealing tape on the edge of the bottom cover (no need to tear the upper layer)
- ▶ Note that inlet & outlet are already marked.
- ▶ Install up cover
- ▶ Sealed by bolts and nuts
- ▶ Cover the viewing port
- ▶ Assembly finished



1. Lay down the bottom cover



2. Fix partition board to the marked rail



3. Fix two partition boards to the marked rails



4. Install elbow facing the inlet side



5. Sealing tape on the edge of the bottom cover (no need to tear the upper layer)



6. Open according to the construction-site request. then install sealing ring



7. Install top cover



8. Seal using bolts and screw nuts



9. Cover the viewing port,
Assembly finished

How it works

The first chamber:the primary fermentation decomposition , loose feces rises due to the expansion of fermentation Forming three layers:

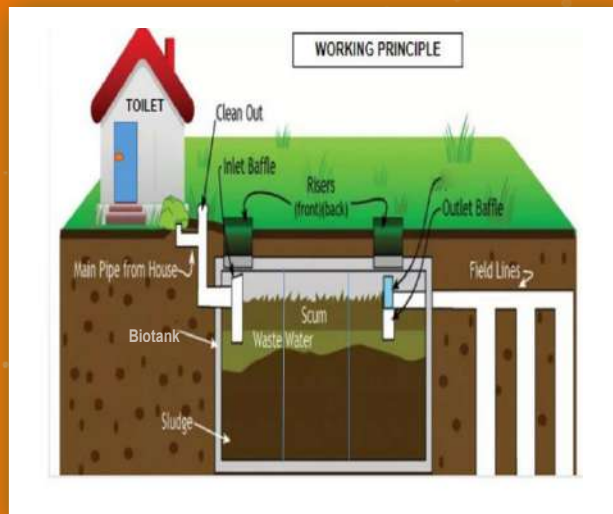
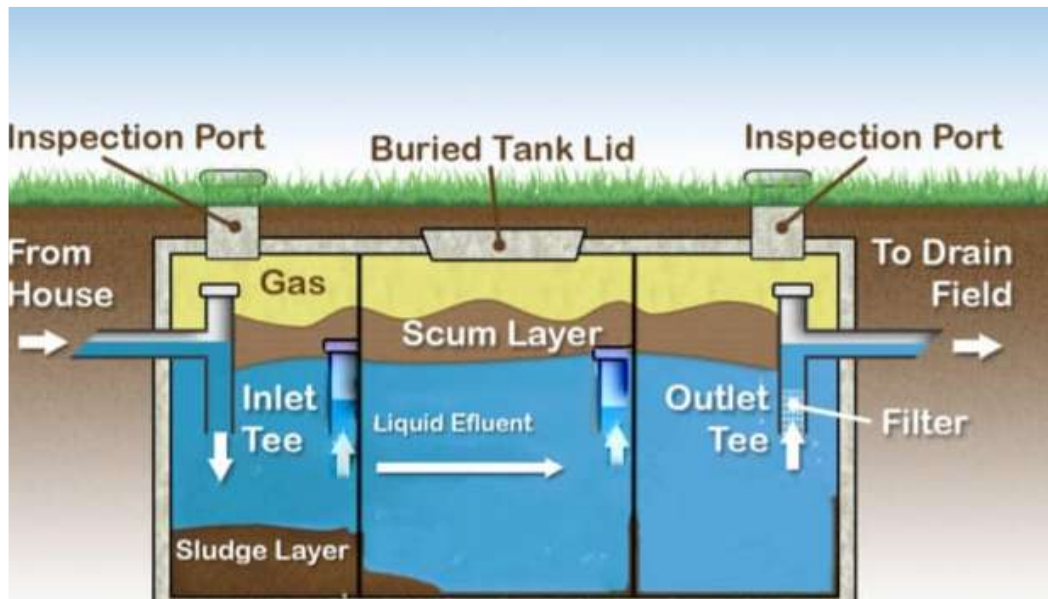
- 1.The upper layer is fecal epidermis.**
- 2.The intermediate layer is fecal liquid.**
- 3.And the bottom layer is fecal residue.**

Eggs of worms are heavier than fecal mixtures settled naturally to the bottom of the biotank for fermentation decomposition .this process takes more than 20 days.

The second stage:storage chamber 2.

The treated feces from the chamber 1# enter into chamber 2, which basically did not contain eggs of worm and pathogenic mirror organisms .this process takes more than 10 days.

After second stage, the treated feces from chamber 2 enter into chamber 3, it already met the requirements of harmless treatment and could be directly used as organic fertilizer .



BIOTANK BIODIGESTER INSTALLATION



Step 1:

Excavate for the biotank biodigester approx: 3m length by 1.5 m by 1.2 m depth from the last manhole pipe.

BIOTANK BIODIGESTER INSTALLATION



Step 2:

Excavate for soak pit approx. 8ft long by 8ft wide
a depth of 10 ft

BIOTANK BIODIGESTER INSTALLATION



Step 3:

Position the biotank biodigester inside its pit. Make sure to use 100mm PVC waste pipe. Install the outlet pipe as shown in the picture above.

BIOTANK BIODIGESTER INSTALLATION



Step 4:

Hand pack hardcore rocks in the soak pit as shown in the picture. Ensure you use low porosity rocks as the ones in the picture above

BIOTANK BIODIGESTER INSTALLATION



Step 5:

Cover the soaking pit with dump proof membrane
(black polythene)

BIOTANK BIODIGESTER INSTALLATION

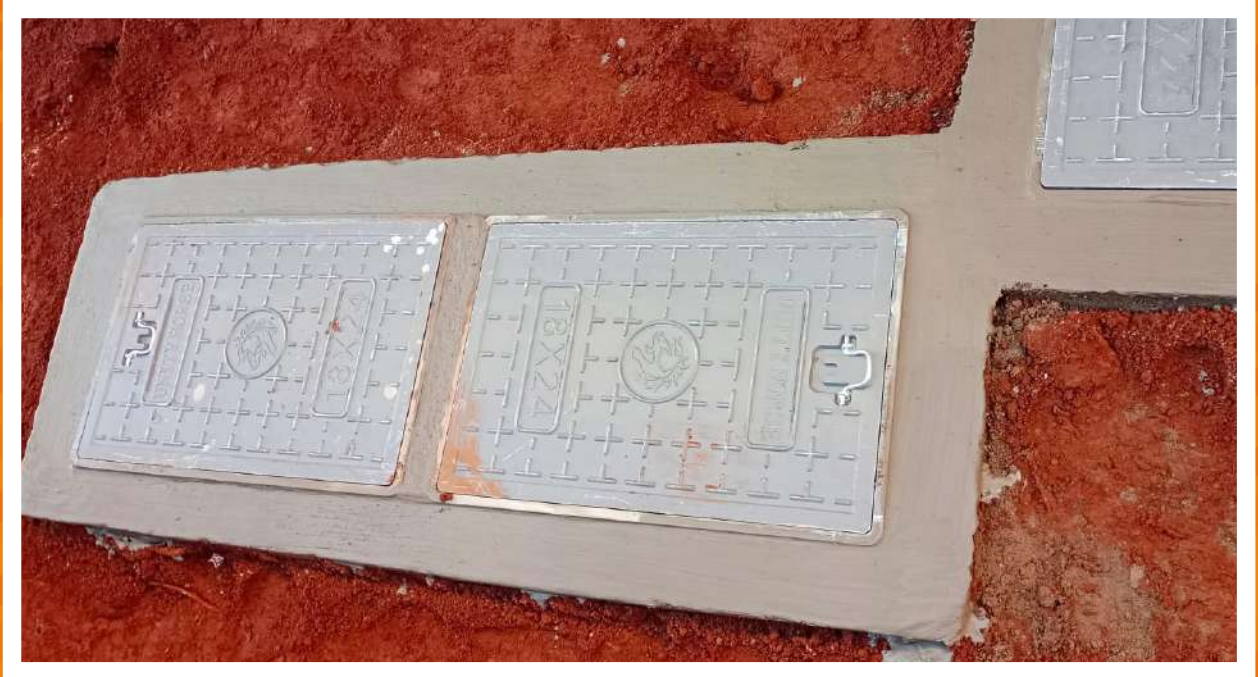


Step 6:
Cover with soil

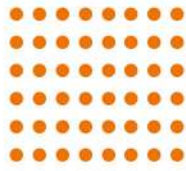


Step 7:
Make provision for 2 inspection points/manhole covers - 600mm by 450mm as shown in the picture

BIOTANK BIODIGESTER INSTALLATION



Step 7:
Final finish



2.5 m³ biodigester
suitable for 20-25 users

Its more affordable

It takes just 2 hours to
install

Its factory

manufactured hence
the quality is
standerdised

Its durable

It has better effluent
quality hence a cleaner
environment

BIOTANK BIODIGESTER

Benefits



Get IN TOUCH

+254 724 881 634

+254 707 752 508

+254 20 7842006

info@biotankafrica.com

biotankafrica@gmail.com

biotankbiodigester@gmail.com



biotankafrica