



# BIOTANK BIODIGESTER

ASSEMBLY AND INSTALLATION

*Guide*

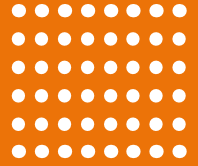
**1.4 M<sup>3</sup>**



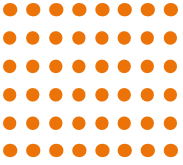
From raw material selection to production designing and testing, each procedure is strictly controlled to achieve highest quality standards.

Our Biotank biodigester is injection molded and is produced in stable, quality, uniform in color, without deviation in weight and thickness.

# ASSEMBLY



The upper \*1/bottom shell \*1/partition board\*2/elbow pipe\*2/  
covers\*3/screws nuts/foam sealant



▶ Lay down the bottom cover

▶ Fix partition board on the marked rails only

▶ Elbow **MUST** face the inlet side of the tank

▶ Sealing tape on the edge of the bottom cover (no need to tear the upper layer)

▶ Note that inlet & outlet are already marked.

▶ Install up cover

▶ Sealed by bolts and nuts

▶ Cover the viewing port

▶ Assembly finished



1. Lay down the bottom cover



2. Fix partition board to the  
marked rail



3. Fix two partition boards to the marked rails



4. Install elbow facing the inlet side



5. Sealing tape on the edge of the bottom cover (no need to tear the upper layer)



6. Open according to the construction-site request. then install sealing ring



7. Install top cover



8. Seal using bolts and screw nuts



9. Cover the viewing port,  
Assembly finished

## How it works

**The first chamber:the primary fermentation decomposition , loose feces rises due to the expansion of fermentation Forming three layers:**

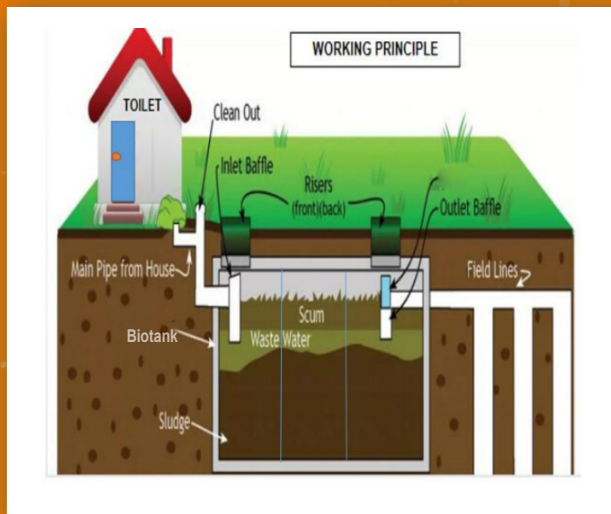
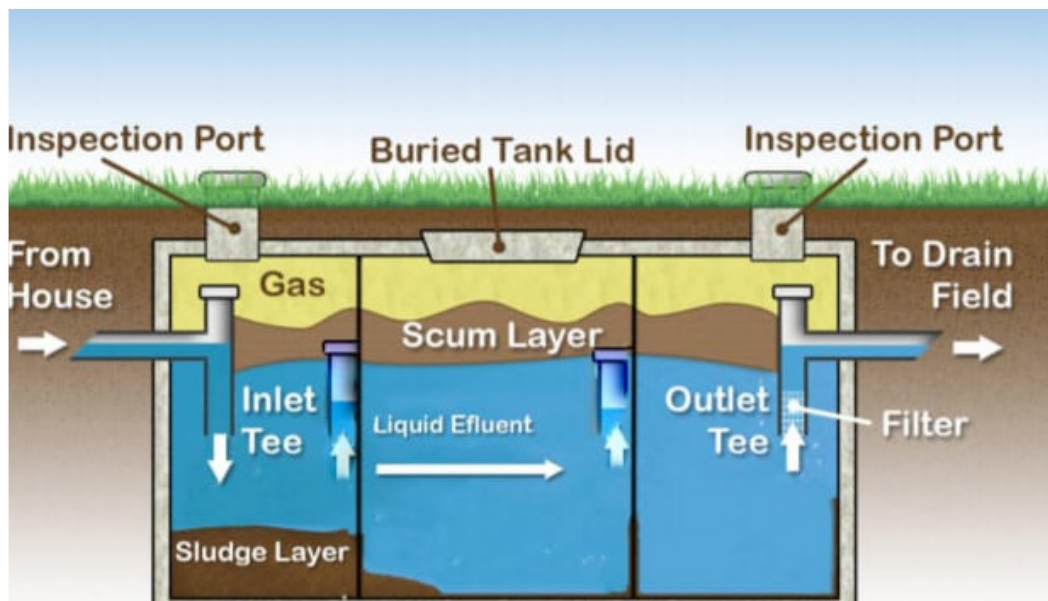
- 1.The upper layer is fecal epidermis.**
- 2.The intermediate layer is fecal liquid.**
- 3.And the bottom layer is fecal residue.**

**Eggs of worms are heavier than fecal mixtures settled naturally to the bottom of the biotank for fermentation decomposition .this process takes more than 20 days.**

**The second stage:storage chamber 2.**

**The treated feces from the chamber 1# enter into chamber 2, which basically did not contain eggs of worm and pathogenic mirror organisms .this process takes more than 10 days.**

**After second stage, the treated feces from chamber 2 enter into chamber 3, it already met the requirements of harmless treatment and could be directly used as organic fertilizer .**



# BIOTANK BIODIGESTER INSTALLATION



## Step 1:

Excavate for the biotank biodigester approx. 6ft by 4ft & a depth of 3ft from the last manhole pipe

# BIOTANK BIODIGESTER INSTALLATION



## Step 2:

Excavate for soak pit approx. 7ft long by 6ft wide and a depth of 7ft

# BIOTANK BIODIGESTER INSTALLATION



## Step 3:

Position the biotank biodigester inside its pit. Make sure to use 100mm PVC waste pipe. Install the outlet pipe as shown in the picture above.

# BIOTANK BIODIGESTER INSTALLATION



## Step 4:

Hand pack hardcore rocks in the soak pit as shown in the picture. Ensure you use low porosity rocks as the ones in the picture above

# BIOTANK BIODIGESTER INSTALLATION



## Step 5:

Cover the soaking pit with dump proof membrane  
(black polythene)

# BIOTANK BIODIGESTER INSTALLATION

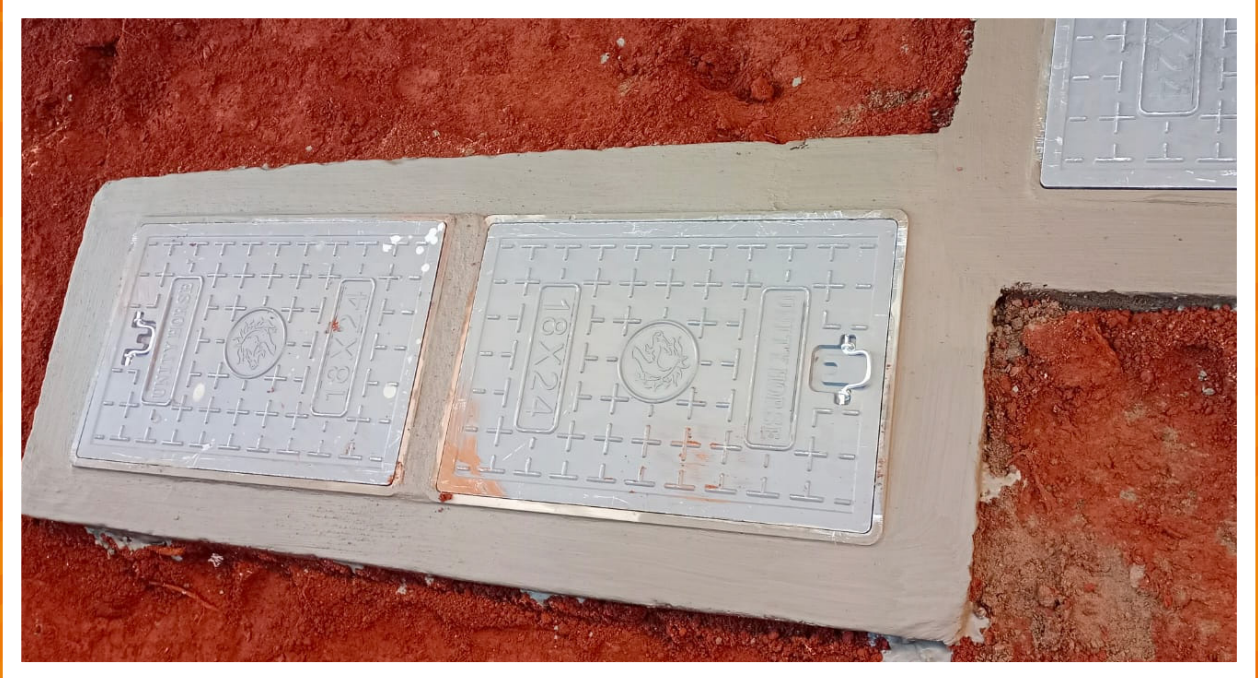


**Step 6:**  
Cover with soil

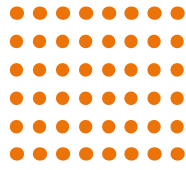


**Step 7:**  
Make provision for 2 inspection points/ manhole covers - 600mm by 450mm as shown in the picture

# BIOTANK BIODIGESTER INSTALLATION



Step 7:  
Final finish



# BIOTANK BIODIGESTER

## *Benefits*

1m<sup>3</sup> biodigester  
suitable for a family  
home

Its more affordable

It takes just 2 hours to  
install

Its factory  
manufactured hence  
the quality is  
standerdised

Its durable

It has better effluent  
quality hence a cleaner  
environment

**BIOTANK BIODIGESTER**



# Get IN TOUCH

+254 724 881 634

+254 707 752 508

+254 20 7842006

[info@biotankafrica.com](mailto:info@biotankafrica.com)

[biotankafrica@gmail.com](mailto:biotankafrica@gmail.com)

[biotankbiodigester@gmail.com](mailto:biotankbiodigester@gmail.com)



[biotankafrica](https://www.facebook.com/biotankafrica)